

ToolPRO

PLU: 633599
CODE: T825011CLA
Manufactured and packaged for
SRGS PTY LTD
ABN 23 113 230 050
6 Coulthards Avenue
Strathpine QLD 4500, Australia
MADE IN CHINA

ToolPRO

1 YEAR
WARRANTY

THIS JACK COMPLIES WITH CONSUMER GOODS
(TROLLEY JACKS) SAFETY STANDARD 2017



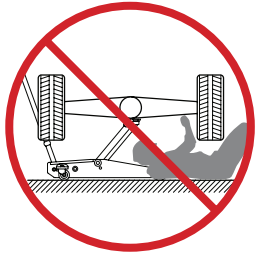
2000KG

ALUMINUM / STEEL GARAGE JACK

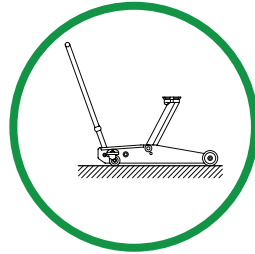
PLU 633599



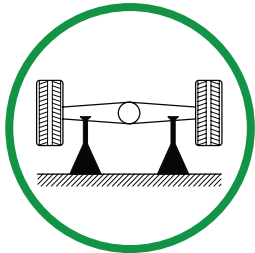
WARNING



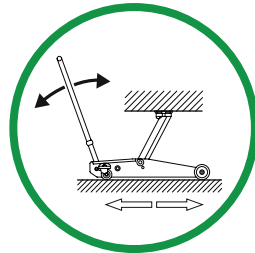
**DEATH OR INJURY
FROM
INCORRECT USE**



**FLAT HARD
LEVEL
GROUND**



**USE TWO
SUPPORT
STANDS**



**FREE TO ROLL
DURING LIFTING
AND LOWERING**

**REFER TO VEHICLE
MANUFACTURER'S
MANUAL FOR INSTRUCTIONS**

SAFETY USAGE INSTRUCTIONS

INSPECTION:

1. Before each use a visual inspection of the jack should be made. This should check for things such as cracks in the welds, leaking oil, any general damage, and loose or missing parts.
 2. An annual inspection of the jack is recommended.
 3. Do not use if any damage is evident.
-
- (1) Consult the vehicle manufacturer's manual prior to the lifting of the vehicle.
 - (2) Conduct a pre-operational check of the equipment.
 - (3) Use the hydraulic trolley jack for lifting and lowering only; the raised vehicle should be supported on suitably rated vehicle support stands.
 - (4) Use the hydraulic trolley jack on a hard level surface and ensure it is free to roll during lifting and lowering.
 - (5) No person should remain in a vehicle that is being lifted.
 - (6) Chock the unlifted wheels of the vehicle.
 - (7) Centrally locate the load on the head cap.
 - (8) Support the vehicle on suitably rated vehicle support stands and remove the hydraulic trolley jack prior to commencement of work on the vehicle.
 - (9) No person should get bodily under a vehicle that is supported only by a hydraulic trolley jack.

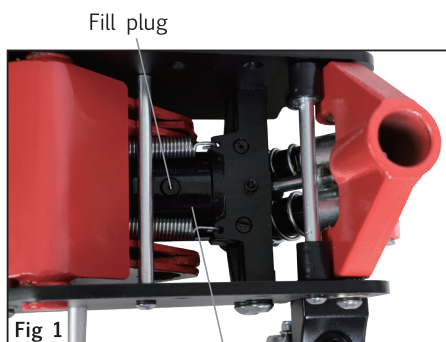
MAINTENANCE INSTRUCTIONS

OIL TYPE:

IMPORTANT: When adding or replacing oil, always use good grade of low viscosity HYDRAULIC FLUID. (Recommended ISO 32, SAE10 or equivalent). **Avoid** mixing types of fluid. **DO NOT** use Brake Fluid, Alcohol, Glycerine, Detergent, Motor Oil or Dirty Oil.

ADDING OIL & OIL LEVEL:

1. Set the jack in a horizontal level position and fully lower the head cap. Remove the fill plug on the oil chamber (Fig. 1).
2. Fill using oil can with a fine spout. The recommended oil capacity is approximately 270ml. If low, add oil as required.
3. Replace the fill plug on the oil chamber.



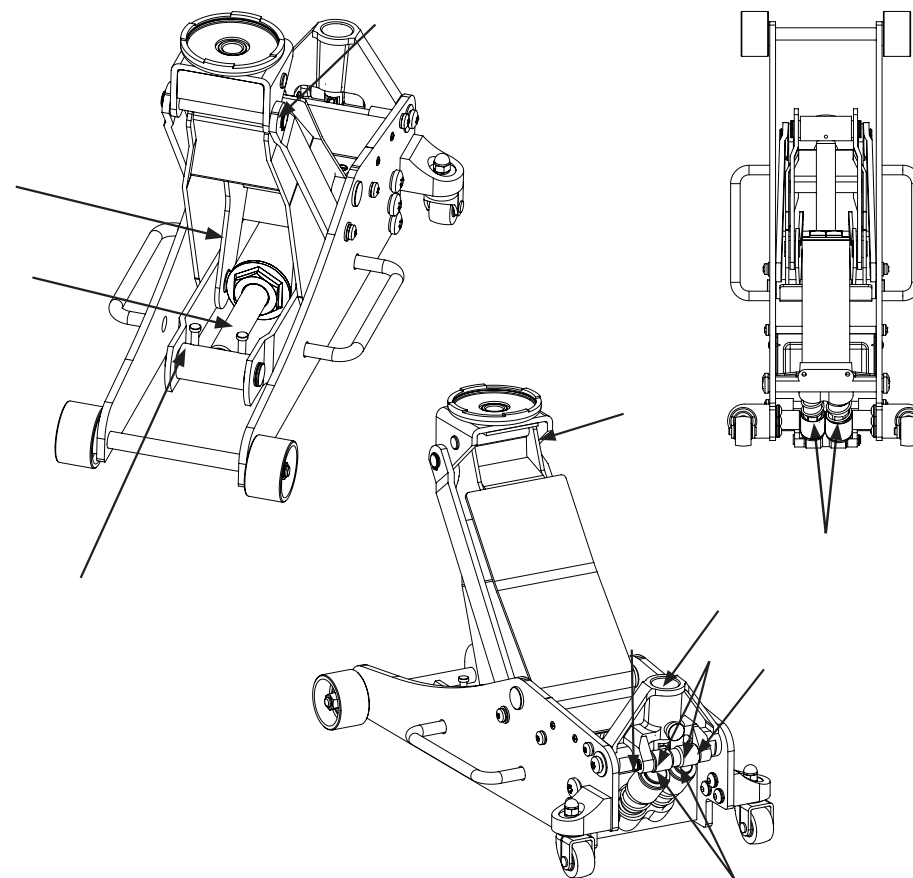
Oil Chamber

AIR PURGE PROCEDURE

1. Open the release valve by turning it anti clockwise to allow arm to fully retract.
2. Replace the handle into the handle sleeve, pump handle rapidly several times.
3. Remove the cover plate, carefully and slowly pinch fill plug to release the trapped air.
4. Turn the release valve clockwise to the closed position and check for proper pump action.
5. Replace the cover plate. This process may need to be repeated several times to purge all air out of the hydraulic system.

LUBRICATION:

Lubricate all pivoting and moving points with lubricating oil prior to initial use and after every 20 lifting/lowering cycles or 3 months (whichever occurs first) full stop.

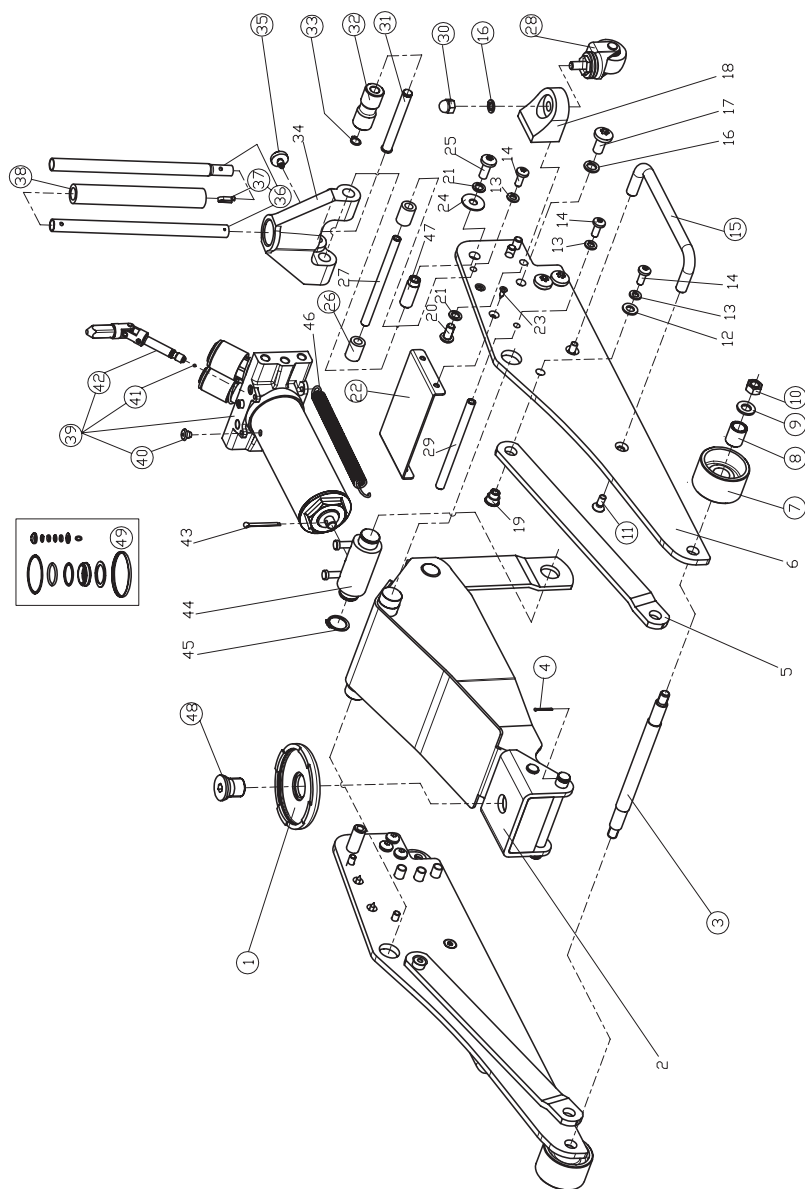


RUST PREVENTION & STORAGE:

1. Check jack every few months for any signs of rust or corrosion. Clean as needed by wiping with an oily cloth.
2. When not in use, always store jack with wheels on horizontal surface and with lifting arm lowered all the way.

Modifications must NOT be carried out or accessories added.

PARTS LIST



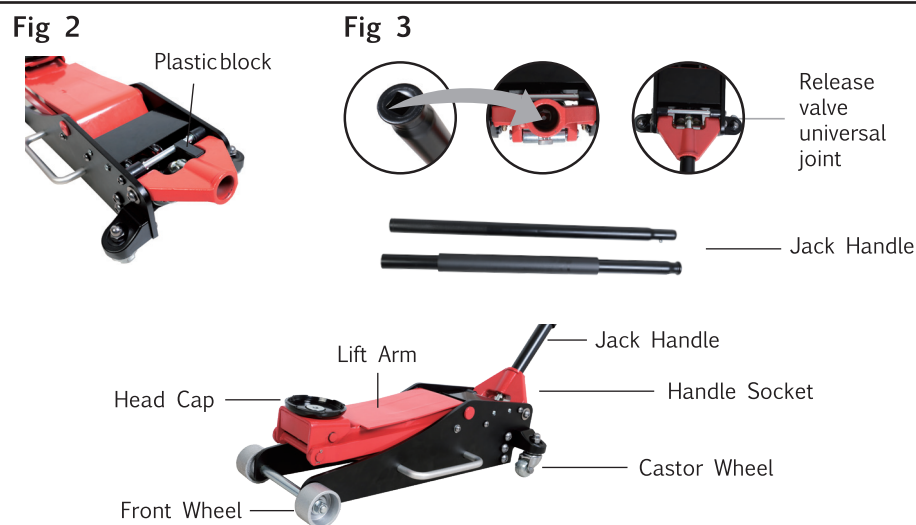
Ref. No.	Qty.	Description	Ref. No.	Qty.	Description
1	1	Head Cap	26	2	Nylon
2	1	Lifting arm assembly	27	1	Limited rod
3	1	Shaft for front wheel	28	2	Rear Castor Assembly
4	2	Cotter pin 2.5 x 25	29	1	Position rod
5	2	Connected bar	30	2	Nut M12
6	2	Side frame	31	1	Pin for roller
7	2	Front wheel	32	1	Contact roller
8	2	Sleeve for front wheel	33	1	C-clip Ø12mm
9	2	Washer M12	34	1	Handle socket
10	2	Nut M12	35	1	Handle socket screw M10 x 19mm
11	4	Flat-head socket cap screw M8 x 20mm	36	1	Handle assembly
12	2	Washer M8	37	1	Handle lock pin
13	6	Spring Washer M8	38	1	Foam protective pad
14	6	Bolt M8 x 22	39	1	Power unit assembly
15	2	Carry handle	40	1	Fill plug
16	8	Spring Washer M12	41	1	Steel ball Ø6mm
17	6	Button-head socket cap screw M12 x 25mm	42	1	Universal joint assembly
18	2	Castor base	43	1	Cotter pin Ø4x45mm
19	2	Connecting rod pintle	44	1	Coupling connector
20	6	Bolt M8 x 22	45	2	C-clip Ø25mm
21	8	Spring Washer M10	46	2	Return spring
22	1	Cover plate	47	2	Handle socket pin
23	4	Tapping Screw ST4.8 x 16	48	1	Head Cap pin
24	2	Washer M10	49	1	Seal kit
25	2	Button-head socket cap screw M10 x 25mm			

Note: Parts are listed and shown for illustration purpose only.
Replacement parts are not available for this product.

ASSEMBLY INSTRUCTION

TO ASSEMBLE THE JACK FOR USE:

1. Insert together the 2 parts of the handle.
2. Depress the handle socket with palm of hand, keep fingers clear when removing holding plastic block (Fig 2).
3. Insert the assembled handle into handle socket on the jack (Fig 3).
4. Secure the handle to the jack with the bolt provided.



SPECIFICATIONS

Working Load Limit: 2000kg
 Jack Dimensions: 693mm x 289mm x 175mm
 Height Lowered: 105mm
 Height Raised: 495mm
 This hydraulic trolley jack is designed to be used with a 106mm diameter head cap, and a two piece handle of 1250mm length.

OPERATION

TO RAISE THE JACK:

1. Place the end of the jack handle over the release valve.
2. Turn the jack handle clockwise until the release valve is closed. Do not over tighten.
3. Chock the wheels of the vehicle with wheel chocks. This will help ensure that the vehicle will remain stable during lifting.
4. Place the jack so the head cap on the lifting arm is directly under the object to be lifted. Please refer to the vehicle manufacturer owner's manual to locate approved lifting points on the vehicle.
5. Insert the handle into the handle socket and pump the jack until the head cap is almost in contact with the vehicle. Check that the head cap will be centrally located at the vehicle manufacturers recommended lifting point.
6. Continue to pump the jack handle to lift the vehicle to the desired height.
7. After lifting the vehicle to the desired height, support the load with an approved pair of vehicle support stands before working under the vehicle.

CAUTION: Do not place any part of your body under a vehicle that is not supported by an approved pair of vehicle support stands before working under the vehicle.

TO LOWER THE JACK:

1. With the jack supporting the weight of the vehicle, remove the vehicle support stands. Please refer to the vehicle manufacturer owner's manual to locate approved lifting points on the vehicle.
2. VERY SLOWLY turn the release valve anti-clockwise using the jack handle. This will open the release valve and the lifting arm will lower.
3. Do not turn the handle too quickly as this may cause damage or injury.

CAUTION: Ensure no part of the body or any objects are under the vehicle when lowering the load.

TROUBLE SHOOTING

POSSIBLE PROBLEMS						POSSIBLE CAUSES AND SOLUTIONS (Refer to operation and maintenance procedures for detailed information)
Jack will not lift load	Jack will lift load, but will not hold	Jack will not lower completely	Poor jack lifting. Pump feels spongy	Jack will not lift to full height	Handle raises by itself when jack is under load	
X						Ensure that the release valve has been turned clockwise to a point at which it is firm/tight.
X	X		X	X	X	Air is trapped in hydraulic system, refer to Air Purge Procedure located on Jack.
X	X		X	X		Oil level is low in jack. Add oil as required.
		X				1. Oil reservoir is over-filled. Drain out some oil. 2. Lubrication of all pivoting and moving parts is necessary.

Note: Do not tamper with any part of the Jack as this may lead to serious injury or death.

WARRANTY

Our product is guaranteed to be free from quality and manufacturing defects for a period of 12 months.

If your product becomes defective during this period, SRGS PTY LTD will offer you either a replacement, credit or refund where a product is faulty; wrongly described; different from the sample shown to you or do not do what they are supposed to do.

This warranty will not cover substantially modified product; misuse or abuse of the product contrary to user instructions or packaging label; change of mind and normal wear and tear.

Our goods come with guarantees that cannot be excluded under the Australian Consumer Law. You are entitled to a replacement or refund for a major failure and for compensation for any other reasonably foreseeable loss or damage. You are also entitled to have the goods repaired or replaced if the goods fail to be of acceptable quality and failure does not amount to a major failure.

To claim the warranty, take the product to the front Service Desk of your nearest store of purchase. You will need to show receipt or other proof of purchase. Additional information may be required to process your claim. Should you not be able to provide proof of purchase with a receipt or bank statement, identification showing name, address and signature may be required to process your claim.

Any expenses relating to the return of your product to the store will normally have to be paid by you. For online store purchases, SRGS PTY LTD will pay for the return freight for any product assessed as having a major failure.

The benefits to the customer given by this warranty are in addition to other rights and remedies of the Australian Consumer Law in relation to the goods or services to which this warranty relates.

This warranty is provided by SRGS PTY LTD, 6 Coulthards Avenue, Strathpine QLD 4500, Australia. Phone: 1300 175 010.